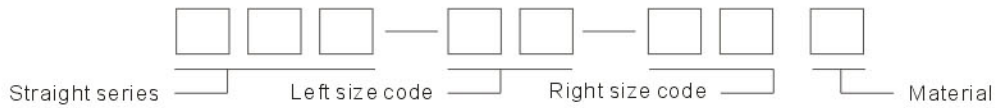


ADAPTER



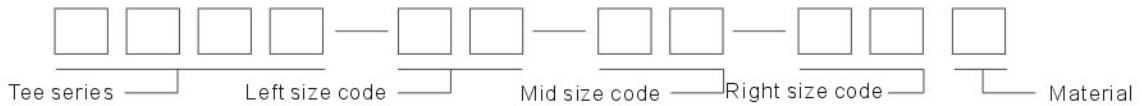
How To Order Adapter

1 Straight part NO.

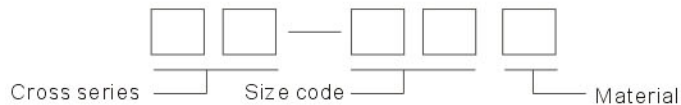


2 Elbow part NO.: Add suffix “4” for 45° elbow and suffix “9” for 90° elbow to the straight part number e.g, 1BG9-04OG and 1JT4-08-06SP.

3 Tee part NO.



4 Cross part NO.



In general for cross fitting, the four ends thread is the same. If different, the first group means left, the second group means up, the third group means right and the fourth group means down.

MATERIAL	CARBON STEEL	BRASS	STAINLESS STEEL
Code	-----	BR	SS

6 Size code table:

BSP THREAD	G1/8" X28	G1/4" X19	---	G3/8" X19	G1/2" X14	G5/8" X14	G3/4" X14	G1" X11	G1.1/4" X11	G1.1/2" X11	G2" X11
BSPT THREAD	R1/8" X28	R1/4" X19	---	R3/8" X19	R1/2" X14	---	R3/4" X14	R1" X11	R1.1/4" X11	R1.1/2" X11	R2" X11
NPT THREAD	Z1/8" X27	Z1/4" X18	---	Z3/8" X18	Z1/2" X14	---	G3/4" X14	Z1" X11.5	Z1.1/4" X11.5	Z1.1/2" X11.5	Z2" X11.5
JIC THREAD	---	7/16" X20	1/2" X20	9/16" X18	3/4" X16	7/8" X14	1.1/16" X12	1.5/16" X12	1.5/8" X12	1.7/8" X12	2.1/2" X12
ORFS THREAD	---	9/16" X18	---	11/16" X16	13/16" X16	1" X14	1.3/16" X12	1.7/16" X12	1.11/16" X12	2" X12	---
SAE THREAD	---	---	---	5/8" X18	---	---	1.1/16" X14	---	---	---	---
FLANGE SIZE	---	---	---	---	1/2"	5/8"	3/4"	1"	1.1/4"	1.1/2"	2"
SIZE CODE	02	04	05	06	08	10	12	16	20	24	32
Note: The dash of metric thread accords with the O.D. Of thread											

Example:

If 1BG' left end thread is G1/2"X14, and right end thread is G3/4"X14, the fitting number is 1BG-08-12. If made of stainless steel, the fitting number is 1BG-08-12SS,

If AJJN' left end thread is 9/16"X18, mid end thread is 9/16"X18 and right end thread is Z1/2"X14, the fitting number is AJJN-06-06-08.

OTHER ADAPTERS

OTHER ADAPTERS

1M P.241

METRIC MALE
DOUBLE USE FOR 60°
CONE SEAT
OR DONDED SEAL

4M P.242

METRIC MALE DOUBLE
USE FOR 60° CONE SEAT
OR BONDED SEAL PLUG

4MN-WD P.242

METRIC MALE CAPTIVE
SEAL HOLLOW
HEX PLUG

1G P.243

BSP MALE O-RING

4G P.243

BSP MALE
O-RING PLUG

1H P.244

METRIC MALE
L-SERIES ISO 6149-3

1H-H P.244

METRIC MALE
S-SERIES ISO 6149-2

4H P.245

METRIC MALE L-SERIES
PLUG ISO 6149-3

4HN P.245

METRIC MALE L-SERIES
HOLLOW HEX PLUG
ISO 6149-3

10-OG P.246

SAE O-RING BOSS
PLUG L-SERIES
ISO 11926-3

4O P.246

SAE O-RING BOSS
PLUG L-SERIES
ISO 11926-3

4ON P.247

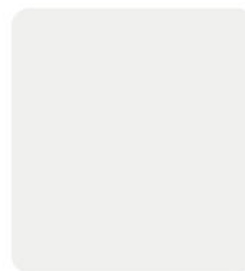
SAE O-RING BOSS
HOLLOW HEX PLUG
L-SERIES ISO 11926-3

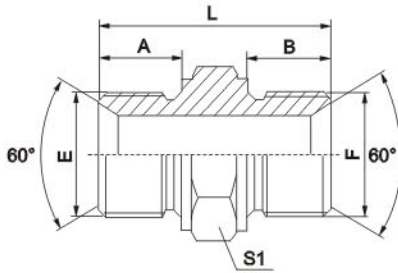
4P P.247

SAE MALE 90° CONE
PLUG SAE J513

5O P.248

SAE O-RING BOSS
L-SERIES ISO 11926-3/
SAE FEMALE ISO 11926-1

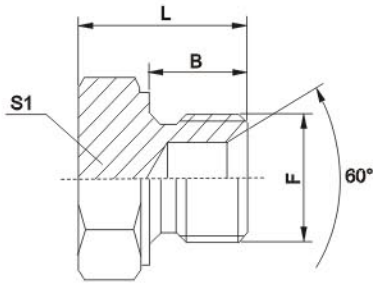




1M

METRIC MALE DOUBLE USE FOR 60°
CONE SEAT OR BONDED SEAL

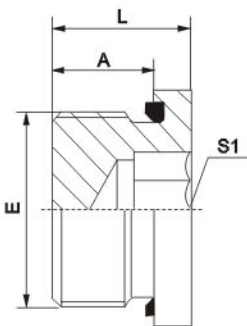
PART NO.	THREAD		DIMENSIONS			
	E	F	A	B	L	S1
1M-10	M10X1	M10X1	8	8	24	14
1M-10-12	M10X1	M12X1.5	8	10	26	17
1M-12	M12X1.5	M12X1.5	10	10	28	17
1M-12-14	M12X1.5	M14X1.5	10	11	29	19
1M-14	M14X1.5	M14X1.5	11	11	30	19
1M-14-16	M14X1.5	M16X1.5	11	12	31	22
1M-16	M16X1.5	M16X1.5	12	12	32	22
1M-16-18	M16X1.5	M18X1.5	12	12	34	24
1M-18	M18X1.5	M18X1.5	12	12	34	24
1M-18-22	M18X1.5	M22X1.5	12	14	38	27
1M-20-22	M20X1.5	M22X1.5	14	14	38	27
1M-22	M22X1.5	M22X1.5	14	14	38	27
1M-22-26	M22X1.5	M26X1.5	14	16	43	32
1M-22-27	M22X2	M27X2	14	16	43	32
1M-22-27D	M22X1.5	M27X1.5	14	16	43	32
1M-26	M26X1.5	M26X1.5	16	16	45	32
1M-26-30	M26X1.5	M30X2	16	18	47	36
1M-26-30D	M26X1.5	M30X1.5	16	18	47	36
1M-27	M27X2	M27X2	16	16	45	32
1M-27D	M27X1.5	M27X1.5	16	16	45	32
1M-30	M30X2	M30X2	18	18	49	36
1M-30D	M30X1.5	M30X1.5	18	18	49	36



4M

METRIC MALE DOUBLE USE FOR 60°
CONE SEAT OR BONDED SEAL PLUG

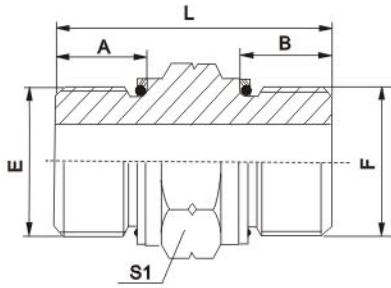
PART NO.	THREAD	DIMENSIONS		
	F	B	L	S1
4M-10	M10X1	8	15	14
4M-12	M12X1.5	10	17	17
4M-14	M14X1.5	11	19	19
4M-16	M16X1.5	12	20	22
4M-18	M18X1.5	12	20	24
4M-20	M20X1.5	14	23	27
4M-22	M22X1.5	14	23	27
4M-24	M24X1.5	14	25	30
4M-26	M26X1.5	16	28	32
4M-27D	M27X1.5	16	28	32
4M-30	M30X2	18	30	36
4M-30D	M30X1.5	18	30	36



4MN-WD

METRIC MALE CAPTIVE SEAL HOLLOW HEX PLUG

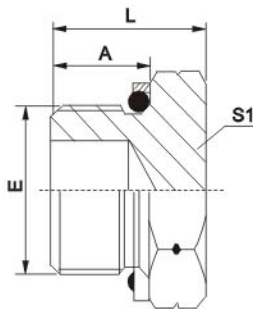
PART NO.	THREAD	CAPTIVE	DIMENSIONS		
	E	E	A	L	S1
4MN-10WD	M10X1	WD-B02	8	12	5
4MN-12WD	M12X1.5	WD-M12	12	17	6
4MN-14WD	M14X1.5	WD-B04	12	17	6
4MN-16WD	M16X1.5	WD-M16	12	17	8
4MN-18WD	M18X1.5	WD-M18	12	17	8
4MN-20WD	M20X1.5	WD-M20	14	19	10
4MN-22WD	M22X1.5	WD-M22	14	19	10
4MN-26WD	M26X1.5	WD-B12	16	21	12
4MN-27WD	M27X2	WD-B12	16	21	12
4MN-33WD	M33X2	WD-B16	18	24.5	17
4MN-42WD	M42X2	WD-B20	20	26.5	22
4MN-48WD	M48X2	WD-B24	22	28.5	24



1G

BSP MALE O-RING

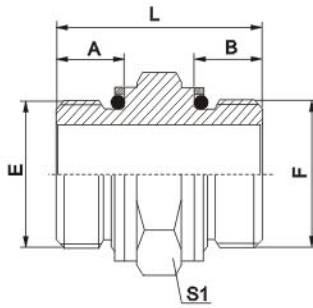
PART NO.	THREAD		O-RING		DIMENSIONS			
	E	F	E	F	A	B	L	S1
1G-02	G 1/8"X28	G 1/8"X28	O011	O011	9.5	9.5	28	14
1G-04	G 1/4"X19	G 1/4"X19	O111	O111	11	11	32	19
1G-06	G 3/8"X19	G 3/8"X19	O113	O113	11.5	11.5	36	22
1G-08	G 1/2"X14	G 1/2"X14	O115	O115	14	14	44	27
1G-12	G 3/4"X14	G 3/4"X14	O119	O119	15.5	15.5	48	32
1G-16	G 1"X11	G 1"X11	O217	O217	18	18	55	41
1G-20	G 1.1/4"X11	G 1.1/4"X11	O222	O222	20	20	61	50
1G-24	G 1.1/2"X11	G 1.1/2"X11	O224	O224	21.5	21.5	64	55



4G

BSP MALE O-RING PLUG

PART NO.	THREAD	O-RING	DIMENSIONS		
	E	E	A	L	S1
4G-04	G 1/4"X19	O111	11	19	19
4G-06	G 3/8"X19	O113	11.5	22	22
4G-08	G 1/2"X14	O115	14	27	27
4G-12	G 3/4"X14	O119	15.5	29.5	32
4G-16	G 1"X11	O217	18	34	41

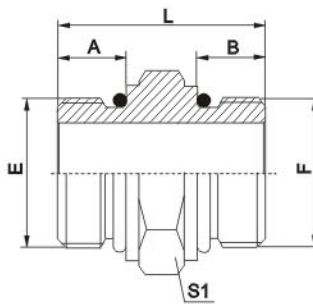


1H

METRIC MALE L-SERIES ISO 6149-3

PART NO.	THREAD		O-RING		DIMENSIONS			
	E	F	E	F	A	B	L	S1
1H-10	M10X1	M10X1	O08.1X1.6	O08.1X1.6	8.5	8.5	28	14
1H-12	M12X1.5	M12X1.5	O09.3X2.4	O09.3X2.4	11.0	11.0	33	17
1H-14	M14X1.5	M14X1.5	O11.3X2.4	O11.3X2.4	11.0	11.0	33	19
1H-16	M16X1.5	M16X1.5	O13.3X2.4	O13.3X2.4	11.5	11.5	34	22
1H-18	M18X1.5	M18X1.5	O15.3X2.4	O15.3X2.4	12.5	12.5	36	24
1H-22	M22X1.5	M22X1.5	O19.3X2.4	O19.3X2.4	13.0	13.0	39	27
1H-27	M27X2	M27X2	O23.5X3.0	O23.5X3.0	16.0	16.0	45	32
1H-33	M33X2	M33X2	O29.5X3.0	O29.5X3.0	16.0	16.0	48	41
1H-42	M42X2	M42X2	O38.5X3.0	O38.5X3.0	16.0	16.0	50	50
1H-48	M48X2	M48X2	O44.5X3.0	O44.5X3.0	17.5	17.5	53	55

NOTE: Fit for ISO 9974-1 port or ISO 6149-1 port when useless of retaining ring.

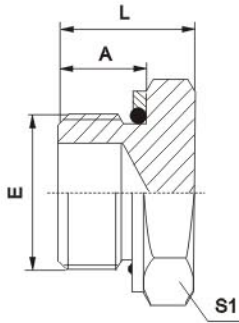


1H-H

METRIC MALE L-SERIES ISO 6149-2

PART NO.	THREAD		O-RING		DIMENSIONS			
	E	F	E	F	A	B	L	S1
1H-10H	M10X1	M10X1	O08.1X1.6	O08.1X1.6	9.5	9.5	31.0	14
1H-12H	M12X1.5	M12X1.5	O09.3X2.4	O09.3X2.4	11.0	11.0	35.5	17
1H-14H	M14X1.5	M14X1.5	O11.3X2.4	O11.3X2.4	11.0	11.0	35.5	19
1H-16H	M16X1.5	M16X1.5	O13.3X2.4	O13.3X2.4	12.5	12.5	39.0	22
1H-18H	M18X1.5	M18X1.5	O15.3X2.4	O15.3X2.4	14.0	14.0	42.0	24
1H-20H	M20X1.5	M20X1.5	O17.3X2.4	O17.3X2.4	14.0	14.0	42.0	27
1H-22H	M22X1.5	M22X1.5	O19.3X2.4	O19.3X2.4	15.0	15.0	46.0	27
1H-27H	M27X2	M27X2	O23.5X3.0	O23.5X3.0	18.5	18.5	55.5	32
1H-33H	M33X2	M33X2	O29.5X3.0	O29.5X3.0	18.5	18.5	56.5	41
1H-42H	M42X2	M42X2	O38.5X3.0	O38.5X3.0	19.0	19.0	58.0	50
1H-48H	M48X2	M48X2	O44.5X3.0	O44.5X3.0	21.5	21.5	63.0	55

NOTE: Fit for ISO 6149-1 port .

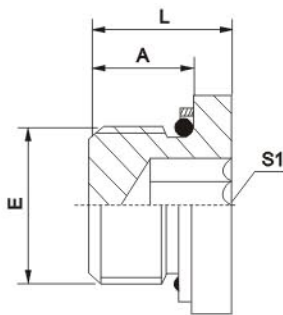


4H

METRIC MALE L-SERIES PLUG ISO 6149-3

PART NO.	THREAD	O-RING	DIMENSIONS		
	E	E	A	L	S1
4H-12	M12X1.5	O09.2X2.4	11	19.5	17
4H-14	M14X1.5	O11.3X2.4	11	19.5	19
4H-16	M16X1.5	O13.3X2.4	12.5	23	22
4H-18	M18X1.5	O15.3X2.4	14	24.5	24
4H-22	M22X1.5	O19.3X2.4	15	27.5	27
4H-27	M27X2	O23.5X3.0	18.5	32	32
4H-33	M33X2	O29.5X3.0	18.5	34.5	41
4H-42	M42X2	O38.5X3.0	19	37	50

NOTE: Fit for ISO 9974-1 port or ISO 6149-1 port when useless of retaining ring.

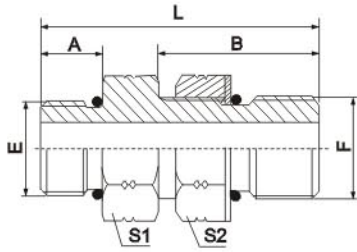


4HN

**METRIC MALE L-SERIES HOLLOW
HEX PLUG ISO 6149-3**

PART NO.	THREAD	O-RING	DIMENSIONS		
	E	E	A	L	S1
4HN-10	M10X1	O08.1X1.6	8.5	11.5	5
4HN-12	M12X1.5	O09.3X2.4	11.0	14	6
4HN-14	M14X1.5	O11.3X2.4	11.0	14	6
4HN-16	M16X1.5	O13.3X2.4	11.5	14	8
4HN-18	M18X1.5	O15.3X2.4	12.5	15.5	8
4HN-22	M22X1.5	O19.3X2.4	13.0	16	10
4HN-27	M27X2	O23.5X3.0	16.0	19	12
4HN-33	M33X2	O29.5X3.0	16.0	20	17
4HN-42	M42X2	O38.5X3.0	16.0	22	22
4HN-48	M48X2	O44.5X3.0	17.5	21.5	24

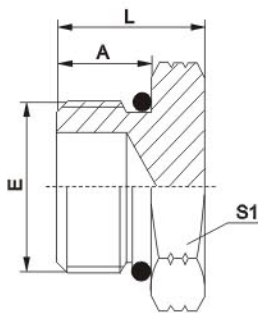
NOTE: Fit for ISO 9974-1 port or ISO 6149-1 port when useless of retaining ring.



10-OG

SAE O-RING BOSS PLUG L-SERIES ISO 11926-3

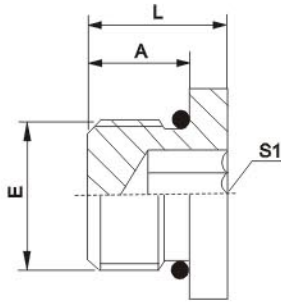
PART NO.	THREAD		O-RING		DIMENSIONS				
	E	F	E	F	A	B	L	S1	S2
10-04OG	7/16"X20	7/16"X20	O904	O904	9.14	18	33	14	17
10-04-06OG	7/16"X20	9/16"X18	O904	O906	9.14	20	35.1	17	19
10-06OG	9/16"X18	9/16"X18	O906	O906	9.93	20	36	17	19
10-06-08OG	9/16"X18	3/4"X16	O906	O908	9.93	22	40	22	24
10-08OG	3/4"X16	3/4"X16	O908	O908	11.13	22	40	22	24
10-08-12OG	3/4"X16	1.1/16"X12	O908	O912	11.13	29	51	32	32
10-10OG	7/8"X14	7/8"X14	O910	O910	12.7	26	46	27	27
10-12OG	1.1/16"X12	1.1/16"X12	O912	O912	15.1	29	54	32	32
10-16OG	1.5/16"X12	1.5/16"X12	O916	O916	15.1	29	54	38	41
10-20OG	1.5/8"X12	1.5/8"X12	O920	O920	15.1	29	54	50	50
10-24OG	1.7/8"X12	1.7/8"X12	O924	O924	15.1	29	54	55	55



4O

SAE O-RING BOSS PLUG L-SERIES ISO 11926-3

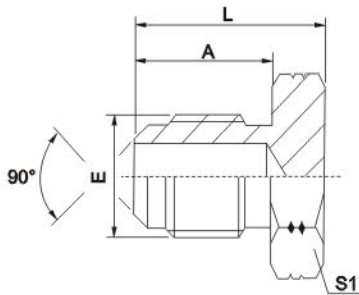
PART NO.	THREAD	O-RING	DIMENSIONS		
	E	E	A	L	S1
40-02	5/16"X24	O902	7.54	14.6	12
40-03	3/8"X24	O903	7.54	14.6	14
40-04	7/16"X20	O904	9.1	16	14
40-05	1/2"X24	O905	9.1	16	17
40-06	9/16"X18	O906	9.9	17.5	17
40-08	3/4"X16	O908	11.1	19.5	22
40-10	7/8"X14	O910	2.7	23	27
40-12	1.1/16"X12	O912	15.1	26.5	32
40-14	1.3/16"X12	O914	15.1	27	36
40-16	1.5/16"X12	O916	15.1	27.5	38
40-20	1.5/8"X12	O920	15.1	30	50
40-24	1.7/8"X12	O924	15.1	30	55
40-32	2.1/12"X12	O932	15.1	32	70



4ON

SAE O-RING BOSS HOLLOW
HEX PLUG L-SERIES ISO 11926-3

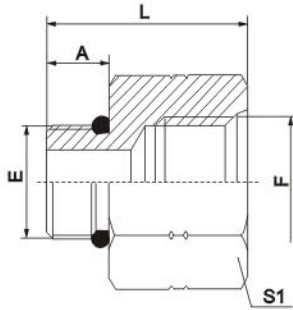
PART NO.	THREAD	O-RING	DIMENSIONS		
	E	E	A	L	S1
4ON-04	7/16"X20	O904	9.1	11.5	5
4ON-05	1/2"X24	O905	9.1	11.5	5
4ON-06	9/16"X18	O906	9.9	12.2	6
4ON-08	3/4"X16	O908	11.1	14.3	8
4ON-10	7/8"X14	O910	12.7	16	10
4ON-12	1.1/16"X12	O912	15.1	19	14
4ON-16	1.5/16"X12	O916	15.1	19	16
4ON-20	1.5/8"X12	O920	15.1	19	19



4P

SAE MALE 90° CONE PLUG SAE J513

PART NO.	THREAD	DIMENSIONS		
	E	A	L	S1
4P-04	7/16"X20	12.7	18.5	14
4P-05	1/2"X20	14.2	20	14
4P-06	5/8"X18	15.7	22	17
4P-08	3/4"X16	19	27	22
4P-10	7/8"X14	22.4	30.5	24
4P-12	1.1/16"X14	25.4	35.5	30



50

SAE O-RING BOSS L-SERIES ISO 11926-3/
SAE FEMALE ISO 11926-1

PART NO.	THREAD		O-RING	DIMENSIONS		
	E	F	E	A	L	S1
50-04-06	7/16"X20	9/16"X18	O904	9.14	31	22
50-06-04	9/16"X18	7/16"X20	O906	9.93	28	17
50-06-08	9/16"X18	3/4"X16	O906	9.93	36	27
50-08-06	3/4"X16	9/16"X18	O908	11.13	31.5	22
50-08-10	3/4"X16	7/8"X14	O908	11.13	38	30
50-08-12	3/4"X16	1.1/16"X12	O908	11.13	36	32
50-10	7/8"X14	7/8"X14	O910	12.7	38	30
50-10-06	7/8"X14	9/16"X18	O910	12.7	20.6	27
50-10-08	7/8"X14	3/4"X16	O910	12.7	35	27
50-10-12	7/8"X14	1.1/16"X12	O910	12.7	43	36
50-12-08	1.1/16"X12	3/4"X16	O912	15.09	26	32
50-12-10	1.1/16"X12	7/8"X14	O912	15.1	40.5	32
50-12-16	1.1/16"X12	1.5/16"X12	O912	15.1	45	41
50-14-12	1.3/16"X12	1.1/16"X12	O914	15.1	43	36
50-16-06	1.5/16"X12	9/16"X18	O916	15.1	26	38
50-16-10	1.5/16"X12	7/8"X14	O916	15.1	26	38
50-16-12	1.5/16"X12	1.1/16"X12	O916	15.1	43.5	38
50-16-14	1.5/16"X12	1.3/16"X12	O916	15.1	43	38
50-16-20	1.5/16"X12	1.5/8"X12	O916	15.1	46.5	50
50-20-12	1.5/8"X12	1.1/16"X12	O920	15.1	35	50
50-20-16	1.5/8"X12	1.5/16"X12	O920	15.1	42	50
50-20-24	1.5/8"X12	1.7/8"X12	O920	15.1	48	55
50-24-16	1.7/8"X12	1.5/16"X12	O924	15.1	35	55
50-24-20	1.7/8"X12	1.5/8"X12	O924	15.1	45	55
50-32-20	2.1/2"X12	1.5/8"X12	O932	15.1	32	70
50-32-24	2.1/2"X12	1.7/8"X12	O932	15.1	32	70